

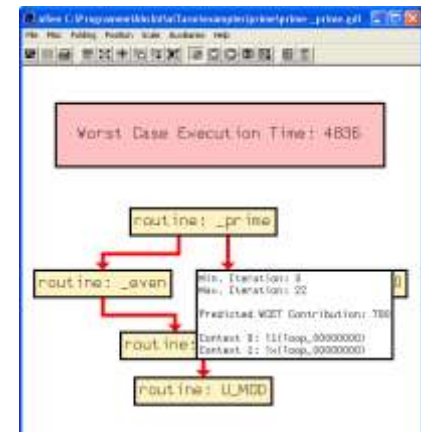
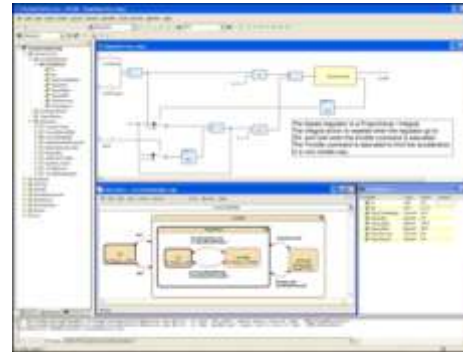
Teaching WCET analysis at Saarland University and AbsInt

- WCET analysis is the topic of various advanced courses, lectures, and summer schools by Reinhard Wilhelm
- At Saarland University
 - Compiler construction
 - Program analysis
 - Embedded Systems

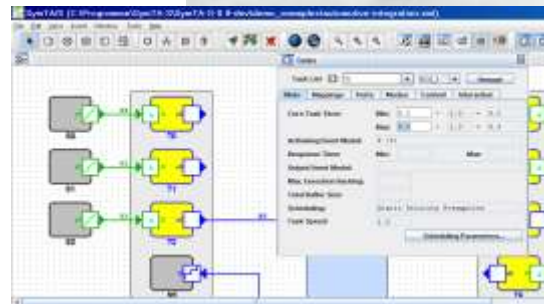


Embedded Systems Design

- What are the foundations of embedded software and how can they be applied to get industry-strength software development tools?
 - Standards
 - Model-based code generation.
 - Compilation
 - Synchronous languages.
 - Scheduling
 - Formal validation and verification.



nxtOSEK/JSP



aiT WCET Analyzer

- 2 days „standard“ course
- Presentation/tutorials at conferences and trade shows
- aiT has been used at 10+ universities for teaching
- Teachers, please do not hesitate to contact us!
 - Teaching material (slides)
 - Underlying theory
 - Tool usage
 - Free educational aiT licenses

